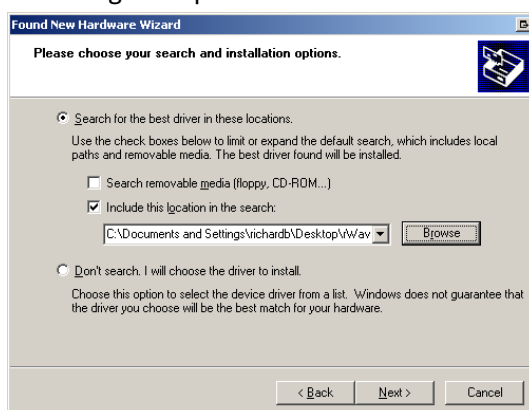


How to update the rDAC / rWave USB software – issue 2.

1. Read these instructions all the way through to familiarise yourself with the process.
2. Un-zip all the files in this package to a folder on your desktop, plug in the rWave or rDAC.
3. If this is the first time you have restored an rWave or rDAC, you will be presented with the **Found New Hardware Wizard**. If this is not the first time you have updated or this does not happen, go to step 11
4. If Windows asks to connect to Windows Update, select **No** and click **Next**.
5. Then select **Install from a list or select location (advanced)**. Click **Next**.
6. Untick **Search removable media**. Tick **Include this location in the search**. You should use Browse to select the directory that holds the DFUTEST.exe file, as was created earlier from extracting the zip file:

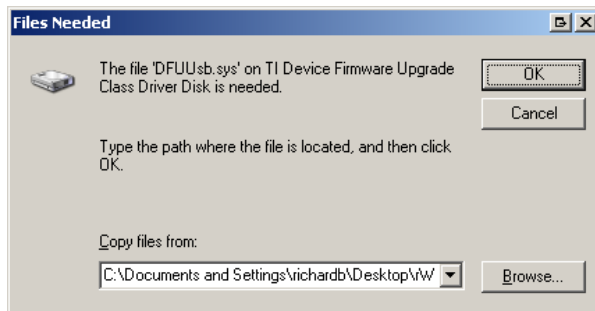


Click **Next**.

7. Windows will start installing the driver. If you see the failed Windows Logo test prompt, click **Continue Anyway**:



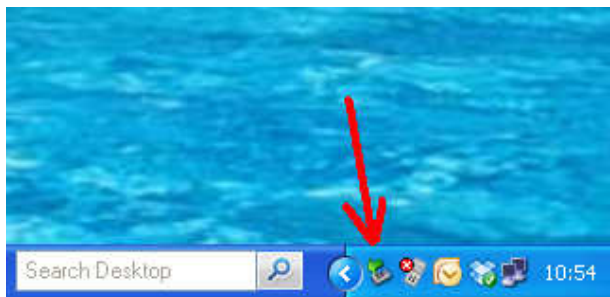
8. If Windows asks for the file DFUUsb.sys. You should use Browse to select the directory that holds the DFUTEST.exe file, as was created earlier from extracting the zip file:



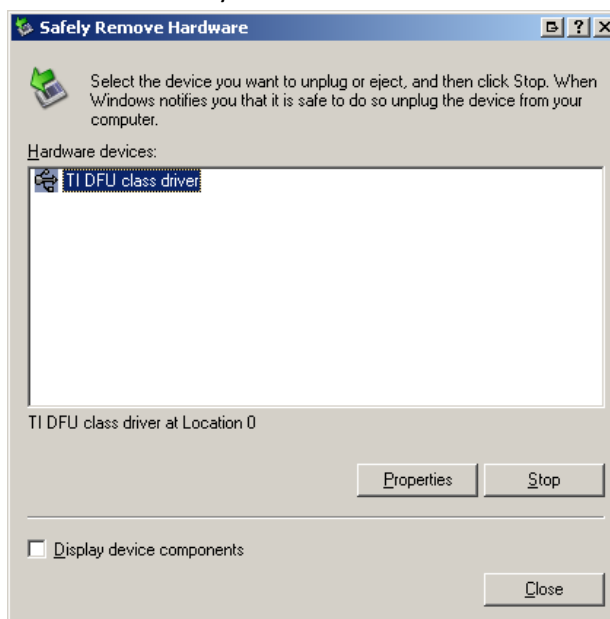
9. Once the DFU driver installation has finished, click **Finish**.

10. Unplug the rWave or rDAC.

11. Plug in the rWave or rDAC. If the rDAC was on when you plugged it in, turn it off and back on. Windows will show the **Safely Remove Hardware** symbol to be shown in the task bar icons near the clock:

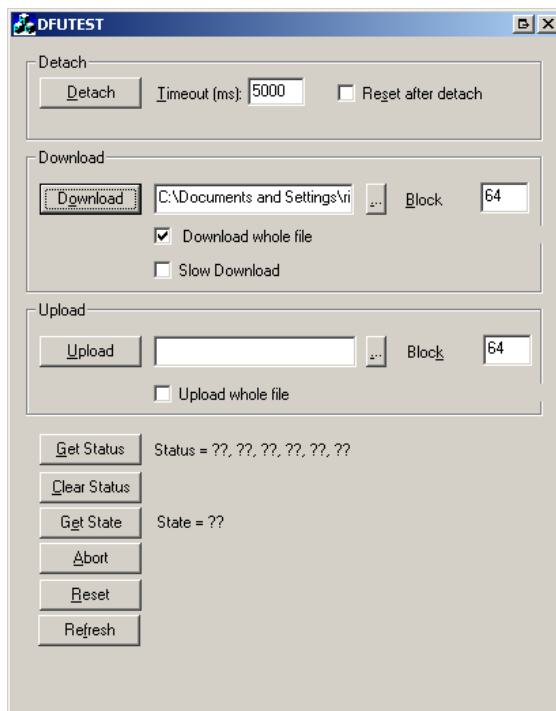


12. Double-click this symbol and there should be a device in the list called **TI DFU class driver**:



13. Click **Close**.

14. Open the folder you extracted the files from the package into.
15. Start the program **DFUTEST.exe**. If this program starts and immediately shows the message box **"No DFU devices found."** then either the device is not being seen by Windows, or you have not carried out steps 4-10. In this case, close the message box, and close the DFUTEST application and carry out steps 4-10.
16. In the Download section of the window, click the button that has three dots "...". A dialogue opens to select a file; select the file **L198BSW_2.0.bin**, which is in the same directory as the **DFUTEST.exe** file. Back on the main DFUTEST screen, TICK the box **Download whole file**. It is essential this box is ticked and the correct file is selected:



17. Click **Download**. You will see a number on the right-hand side increasing, followed by "Download completed". Click **OK**, close the DFUTEST programme, unplug the device, plug the device back in.
18. The device should now appear correctly as a sound card.

Change control:

Issue 1	17/12/10	Initial release
Issue 2	21/12/10	Updated firmware with longer DFU timeout